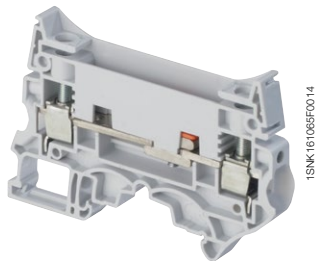
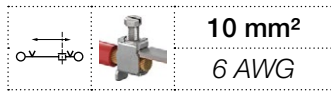
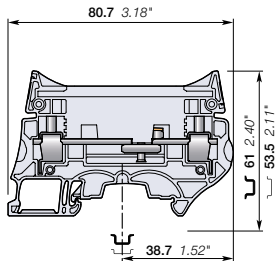


ZS10-ST screw clamp terminal blocks

Test disconnect with sliding link - 8 mm 0.315 in spacing



ZS10-ST



8 mm 0.315 in spacing

Description

- Secure your disconnect operations in control circuits with the robust sliding link operated with a screwdriver,
- Customize ZS10-ST with colored test sockets in order to identify conveniently each phase of the Current Transformer or Potential Transformers secondary circuits,
- Fully compatible with the ZS10-ST-T4 accessories.

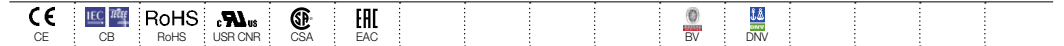
Ordering details

Description	Color	Type	Order code	Pkg qty	Weight (1 pce) g
Disconnect	Grey <input type="checkbox"/>	ZS10-ST	1SNK508310R0000	25	24.80

Main technical data

Connecting capacity		IEC	UL - CSA	Mounting instructions	
1 conductor per clamp	Rigid - Solid / Stranded	0.5 ... 10 mm ²	24 ... 6 AWG	Rail	TH 35-7.5, TH 35-15
	Flexible	0.5 ... 10 mm ²	24 ... 6 AWG	Wire stripping length	13 mm 0.512 in
	with non insulated ferrule	0.5 ... 10 mm ²	24 ... 8 AWG	Screw clamp Tool	Flat screwdriver Ø 3.5 mm Ø 0.138 in
	with insulated ferrule	0.5 ... 6 mm ²	24 ... 10 AWG		
2 conductors per clamp	Rigid - Solid / Stranded	0.5 ... 4 mm ²	20 ... 12 AWG	Torque	1.3 Nm ± 0.3 11.5 lb.in ± 2.65
	Flexible	0.5 ... 4 mm ²	20 ... 12 AWG		
with twin ferrule		0.5 ... 4 mm ²	20 ... 12 AWG	Disconnect device Tool	Flat screwdriver Ø 3.5 mm Ø 0.138
Rated current / Rated cross section		50 A / 10 mm ²	53 A / 6 AWG		
Rated short-time withstand current (1s)		1200 A		Torque	0.4 Nm ... 0.6 Nm 3.5 lb.in ... 5.3 lb.in
Rated voltage		630 V	300 V		
Impulse withstand voltage		8000 V			
Protection		IP20	NEMA 1		

The connecting capacity data for one Rigid - Solid / Stranded - Flexible conductor (when applicable) is a mandatory information required by IEC, UL and CSA standards (Copper conductors). All other data are provided as supplementary information only. For more details, please consult our CB, UL or CSA certificates and technical datasheet available on <http://www.ABB.com>



Accessories

Description	Color	Type	Order code	Pkg qty	Weight (1 pce) g		
1 End stops	Dark grey <input type="checkbox"/>	BAM4	1SNK900001R0000	50	14.00		
2 End sections	Dark grey <input type="checkbox"/>	ES10-ST	1SNK508910R0000	20	3.5		
3 Jumper bars	Orange <input type="checkbox"/>	2 poles 50 A (IEC)	JB8-2-R1	1SNK908902R0000	10	7.6	
		3 poles 50 A (IEC)	JB8-3-R1	1SNK908903R0000	10	11.6	
		4 poles 50 A (IEC)	JB8-4-R1	1SNK908904R0000	10	15.5	
		5 poles 50 A (IEC)	JB8-5-R1	1SNK908905R0000	10	19.4	
		10 poles 50 A (IEC)	JB8-10-R1	1SNK908910R0000	10	39.00	
4 Circuit separators	Dark grey <input type="checkbox"/>	CS-R3	1SNK900107R0000	20	6.40		
5 Test sockets	Yellow <input type="checkbox"/>	AJS9	1SNA179726R0200	25	3.60		
	Black <input type="checkbox"/>	AJS9-BK	1SNA206680R1500	25	3.60		
	Green <input type="checkbox"/>	AJS9-GN	1SNA206681R0200	25	3.60		
	Grey <input type="checkbox"/>	AJS9-GR	1SNA206682R0300	25	3.60		
	Blue <input type="checkbox"/>	AJS9-BL	1SNA206683R0400	25	3.60		
	Red <input type="checkbox"/>	AJS9-RD	1SNA206720R1400	25	3.60		
	White <input type="checkbox"/>	AJS9-WH	1SNA206765R0000	25	3.60		
	Purple <input type="checkbox"/>	AJS9-PR	1SNA206772R0000	25	3.60		
	Brown <input type="checkbox"/>	AJS9-BR	1SNA206782R0000	25	3.60		
			AL4-M3	1SNA206721R0100	50	1.10	
	6 Terminal block markers	White <input type="checkbox"/>	Blank marker	MG-CPM 13 41791	1SNB041791R0612	1680	0.27
			Blank card	MC812	1SNK160000R0000	22	10.00
				MC812PA	1SNK169999R0000	20	14.00
Universal wire markers holder			UMH	1SNK900611R0000	10	0.20	

Complete list of accessories is indicated in the terminal block datasheet including end stops. Some accessories such as jumper bars may modify the terminal block's ratings: Complete information available in the accessories section of the catalog.

Screw clamp terminal blocks

Description	Color	Type	Order code	Pkg qty	Weight (1 pce) g
Feed-through	Grey <input type="checkbox"/>	ZS10-R1	1SNK508011R0000	25	20.90
Ground	Green-yellow <input type="checkbox"/>	ZS10-PE-R1	1SNK508151R0000	25	28.40

All the technical data for UL/CSA standard and dimensions in inches are in italic. Technical data valid for copper conductors only.